

PP22 Series Push-Pull and E-Stop Switches

Features

- Robust design for harsh environment
- Dual O-ring protecting the contact from any contaminant
- Self-cleaning, sliding contacts
- Resistant to impact, vibration and shock
- Deutsch 4 pin connector available
- IP67 rated

Specifications

Rated Voltage	12VDC, 24VDC, 48VDC, C300
Current	20A@12V, 10A@24V, 4A@48V
Current, Min.	0.1A, resistive
Dielectric	500Vdc or 707Vdc for 1 minute, 5mA max.
Voltage Drop	1Vdc at rated dc loads, max.
Operating Force	~27N
Life	25,000 cycles at rated load
Handle Shock	1m[39.37in] drop to hard surface
Vibration	10g max., 18Hz to 1000Hz
Humidity	95% non-condensing
UV Color Fade	DE 3 max. at 15,000 hours UVB, ASTM G 154-06
Temperature (Operating)	-40°C~+85°C (-40~+185°F)
Temperature (Storage)	-40°C~+85°C (-40~+185°F)
Sealing	IP67

Electrical Ratings

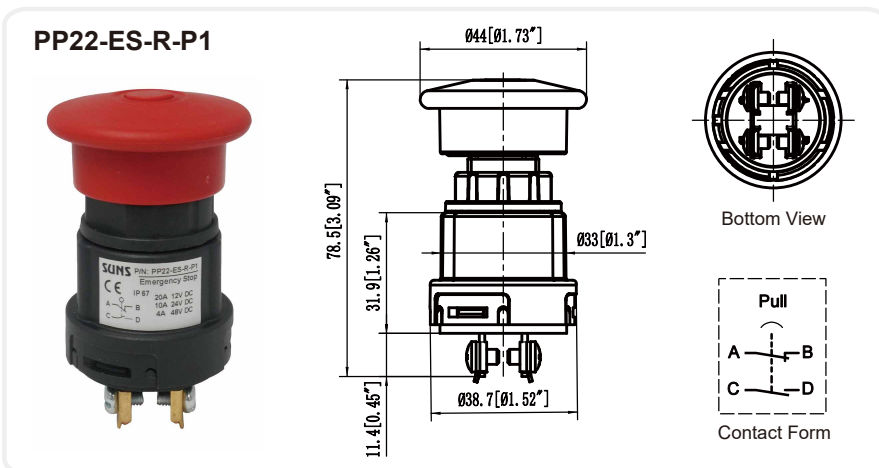
IEC 60947-5-1 / EN 60947-5-1							
Designation & Utilization Category	Rated operational current I _e (A) at rated operational voltage U _e					VA rating	
	120V	240V	380V	480V	600V	Make	Break
AC15 C300	1.5	0.75	-	-	-	1800	180

Selection Guide:

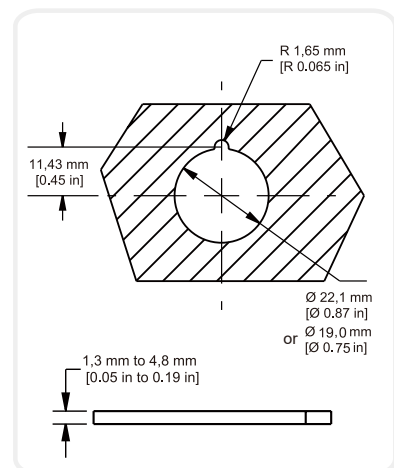
PP22	-	ES	-	B	-	P1	-		-		-	DT4	
		Switch Type		Button Color		Contact		Option (For Wire leads only)		Wire Leads/Cable		Cable Exit	Deutsch 4pin connector (Optional)
		MP: Momentary E-stop switch		B: Black		P1: 1NO/1NC		Blank: Default		Blank: Screw or default 7" cable for DT4		Blank: Side exit	
		ES: Maintained E-stop switch		G: Green		P5: 1NO		L: No Cap		U6: 6" wires leads		B: Bottom exit	
		ES2: 30mm Head Maintained E-stop switch		R: Red		P6: 1NC				F2: 2' wires leads			
				Y: Yellow		P7: 2NO				C12: 12" cable			
				O: Orange		P8: 2NC				CF3: 3' cable			
				U: Blue									
				W: White									
				A: Gray									

*Wire and cable length numbers can be changed for customer needs

Picture and Dimensions:

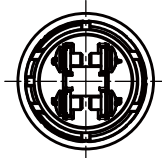
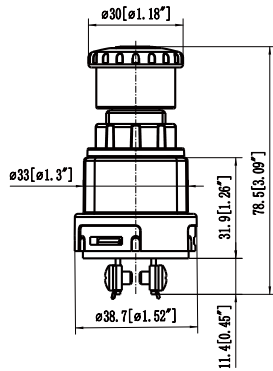


Mounting Hole:

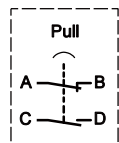


PP22 Series Push-Pull and E-Stop Switches

PP22-ES2-R-P1

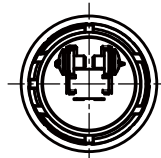
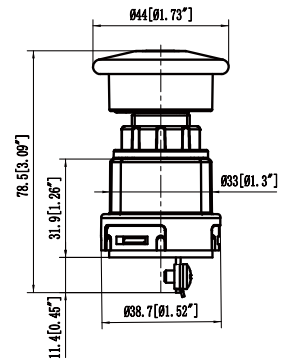


Bottom View

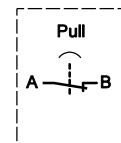


Contact Form

PP22-ES-R-P6

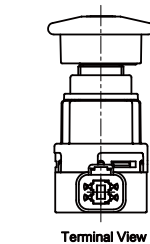


Bottom View

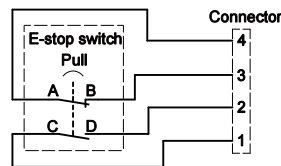


Contact Form

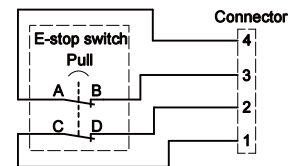
PP22-ES-R-P1-DT4



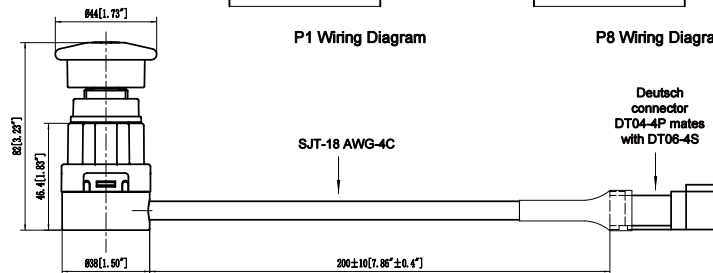
Terminal View



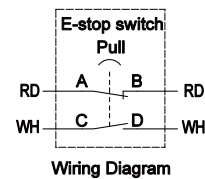
P1 Wiring Diagram



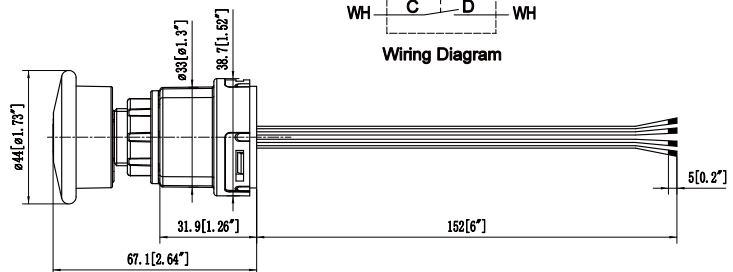
P8 Wiring Diagram



PP22-ES-R-P1-LU6*



Wiring Diagram



*L stands for low profile wire leads without cap